

Network Video Recorder Quick Start Guide

Important Safety Instructions

- This device is designed and manufactured to assure personal safety for indoor usage. Improper use can result in electric shock or fire hazard.
- Do not use this product near any liquids.
- Do not place this product on an unstable surface.
- Do not drop or shake the product.
- Do not allow anything to rest on the power supply and power cord.
- Never connect other uncertain power supply to this product as it
- may cause dangerous voltage or short out that could result in a fire or electric shock.
- Do not put this product in a airtight space. Keep cooling system unobstructed.
- Unplug this product from the wall outlet before cleaning.
- Do not use liquid cleaners or aerosol cleaners. Use a damp cloth for cleaning.

FCC statements

This device complies with Part 15 of the FCC Rules. Operation is subject to the following two conditions: (1) this device may not cause harmful interference, and (2) this device must accept any interference received, including interference that may cause undesired operation.

LVD/EMC Directive



This product complies with the European Low Voltage Directive 2014/35/EU and EMC Directive 2014/30/EU.

WEEE Directive-2012/19/EU



The product this manual refers to is covered by the Waste Electrical & Electronic Equipment (WEEE) Directive and must be disposed of in a responsible manner.

Battery Directive-2013/56/EC

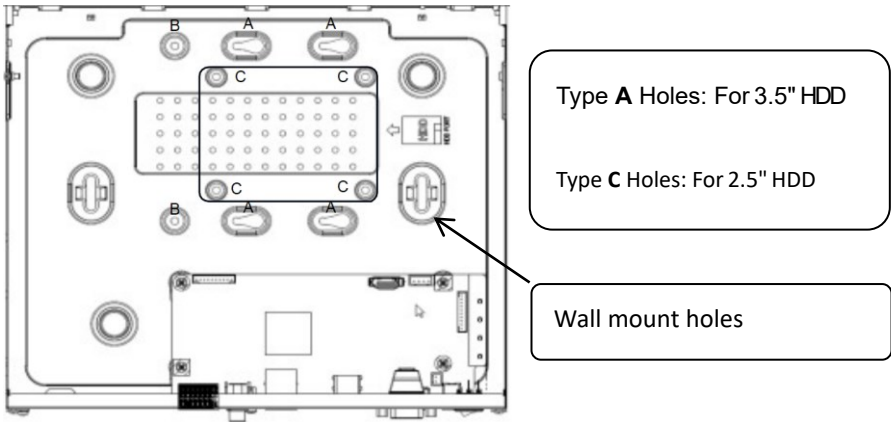


Battery in the product complies with the European Battery Directive 2013/56/EC. For proper recycling, return the battery to your supplier or to a designated collection point.

Hard Drive installation

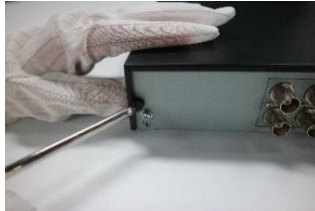
There is no Hard drive built-in the NVR product in general selling. To store your media data, you have to buy at least one 3.5 inch or 2.5 inch Hard Drive and install it by yourself.

An example for hard drive screws holes diagram:



Installing steps:

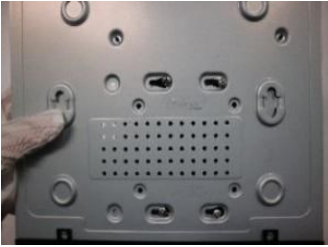
Important: Unplug the power cord from the power outlet before installation.



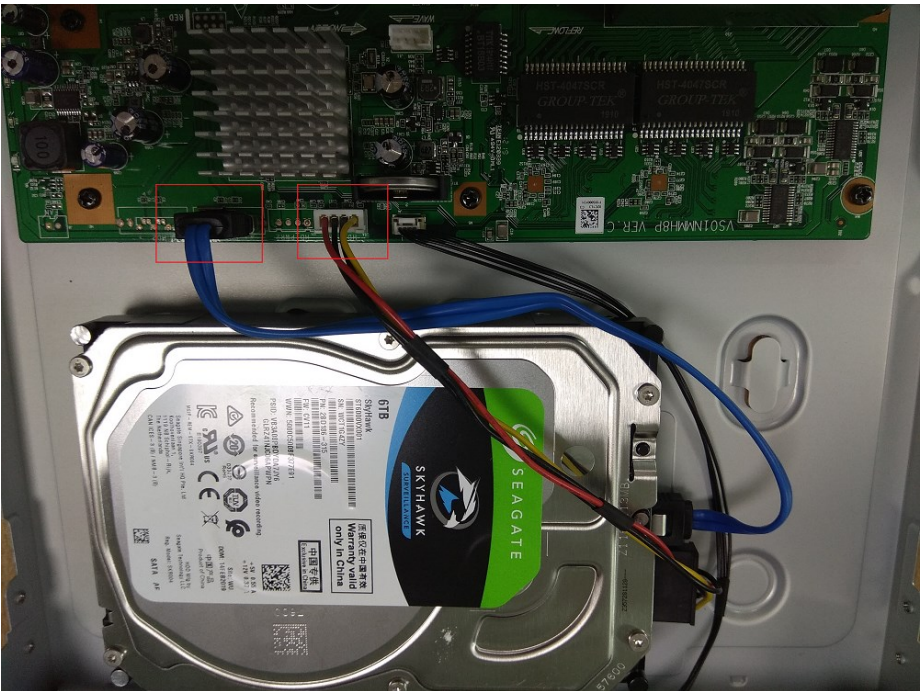
1. Loosen screws on the rear panel and both sides. Remove the cover.



2. Tighten the 4 screws a bit to hard drive screws holes, connect the data and power cables



3. Slide the hard drive into the screw slots. Tighten all screws.

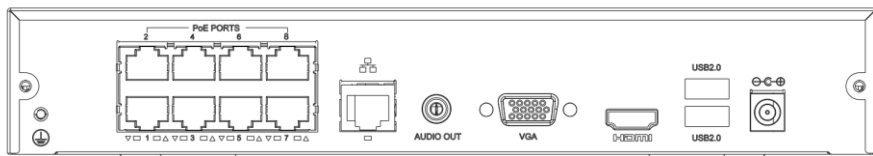


4. Connect the HDD data and power plug to recorder main-board.

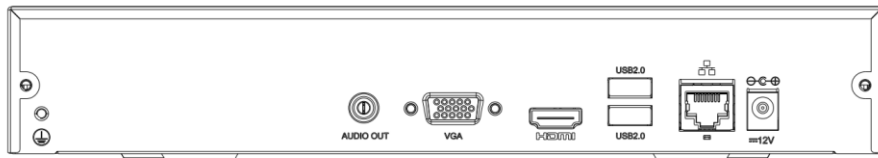
5. Put the cover back and tighten all the cover screws.

Product panel View

- Rear Panel built-in PoE switch



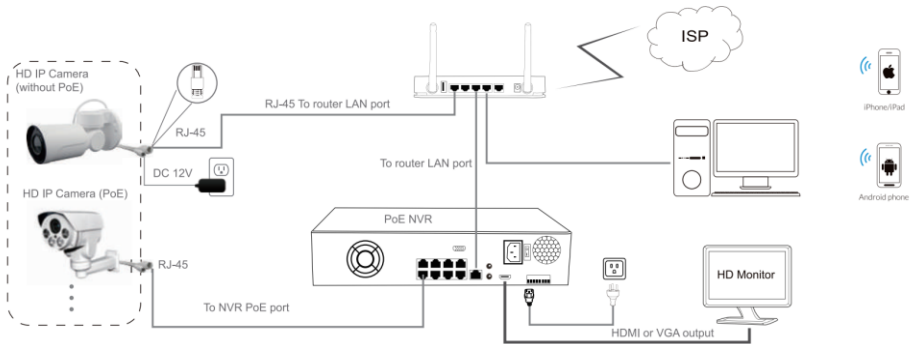
- Rear Panel without PoE switch



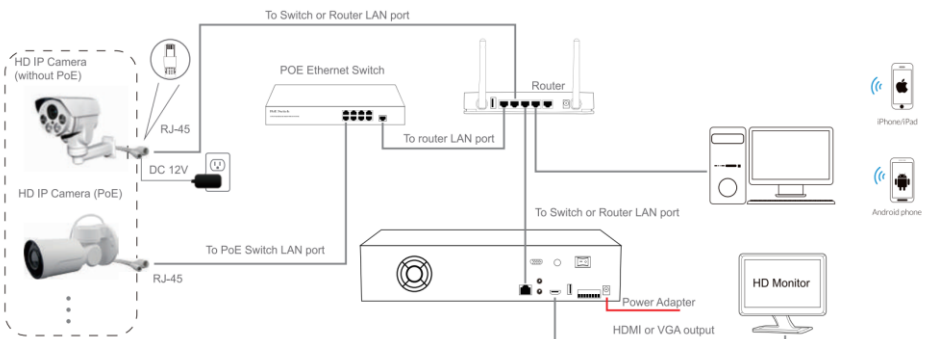
Notice: Pictures are for reference only. The actual NVR may vary in appearance.

System Connection Diagram

■ Product built-in PoE switch



■ Product without PoE switch



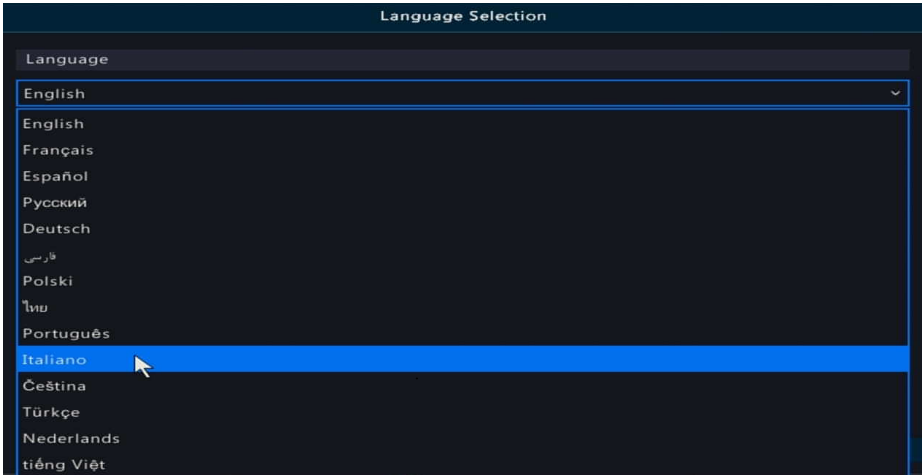
Important:

- The NVR built-in PoE switch ports are intended only for PoE cameras, do not connect to other devices. Otherwise, it may cause damage to your devices.
 - It's recommended to use Cat5e or above standard 4 pairs UTP for PoE network communication.
-

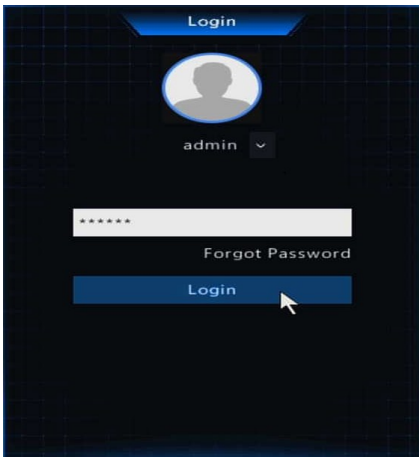
Power on and setup NVR following Wizard

After switching on, the recorder system **Startup Wizard** will pop up to guide you setup your system quickly.

Select your familiar language



Login with default admin account



Default Password

Username: admin

Password: 123456

Change a strong password for admin

Change Password

Username: admin

Old Password: *****

Password: *****| Strong

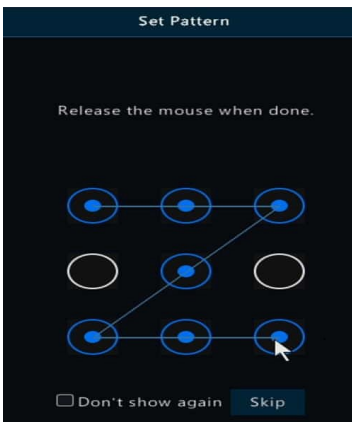
Confirm: *****

A strong password is recommended: at least 8 characters including uppercase and lowercase letters, digits and special characters (except / \ : * ? ' " < > | %).

OK Cancel

It's highly recommended to setup a strong password at least 8 characters that contain 3 kinds of characters above included in letters, digits, and special characters. (except / \ : * ? ' " < > | %)

Set a pattern for unlocking the NVR more friendly



You can **Skip** if you do not want to use the unlock pattern feature.

Time and time zone setup



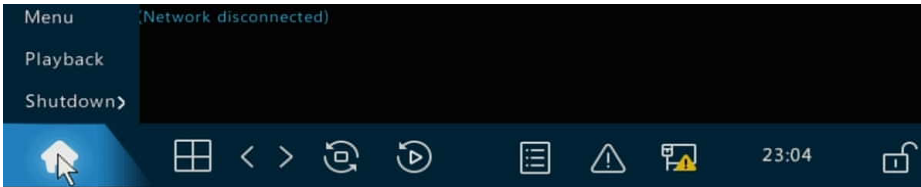
Network configuration



DHCP mode is enabled for obtaining IP address configurations automatically when there is a router or DHCP server connected in the LAN network.

If the NVR is not connected to a router or DHCP server, the NVR will set itself to 192.168.1.30 by default. You can set your PC IP address to 192.168.1.* to access the device in the local area network.

Start-up task bar

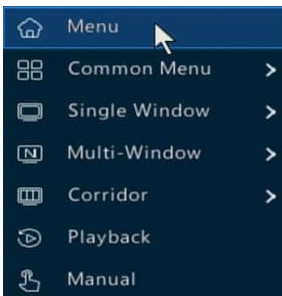


Menu: go to settings menu.

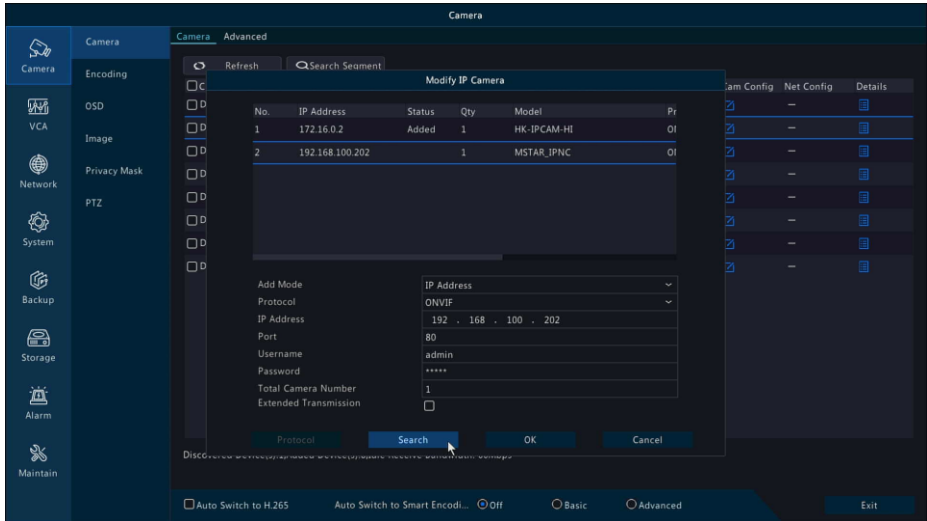
Playback: search video and playback video files.

Shutdown: shutdown or reboot this system

Right-click menu



Adding IP camera



Plug-and-Play	Add Mode: Only PoE NVR can support Plug-and-Play No PoE NVR select IP address to add manually
IP Address	
Plug-and-Play	
MyDDNS	
Domain Name	

Adding PoE Camera to NVR by plugging into NVR PoE Port

1. Make sure your camera can support PoE function.
2. Connect the PoE camera to NVR PoE port via Cat5e (4 pairs UTP) cable.
3. Camera will show video in 1-2 minutes automatically. (**Plug-and-Play**)

Adding camera to No PoE NVR

1. Make sure your camera can support PoE function or not.
2. PoE camera: Connect the PoE camera to your network switch PoE port via Cat5e (4 pairs UTP) cable.
3. No PoE camera: Connect the camera to your network switch port via Cat5e cable. Then connect the camera **power supply** to camera power jack.

4. Connect NVR LAN Port to the same network switch with cameras.
5. Go to NVR **Menu** -> **Camera** -> **Refresh**, search and add camera manually.

Important:

- If the NVR can not recognize your camera, please check the camera IP address configuration using the camera search tool to assign the same IP schema to the cameras. (e.g. NVR:192.168.1.130, IP cameras: 192.168.1.131, 192.168.1.132 ...)
 - If camera is listed on NVR but no video , please double-check the password when adding.
 - This NVR PoE Ports has a built-in DHCP server, enable camera DHCP when testing the plug-and-play compatibility with your PoE camera.
 - It is recommended to use static IP address both on NVR and cameras for more stable working in daily use .
-

Setup Recording

The NVR will start 7*24hrs continuous recording once camera added. This is the most reliable way to store your video/audio in daily use. Motion only recording will extend the recording time before the recordings are over written

Follow the steps blow to enable **Motion/Event** recording:

1. Go to **Main Menu -> Storage -> Hard Disk**. Check the HDD status ,make sure it's **Normal** and **Read/Write**.

No.	Total(GB)	Free(GB)	Status	Type	Usage	Property	Configure
1	5589.03	5247.25	Normal	Local	Recording/Snapshot	Read/Write	

2. Go to **Storage -> Recording**, Edit the Schedule to **Motion** or **Event**.

Recording Schedule

Select Camera: D1(Camera)

1 Enable Schedule

Advanced Edit

Select Day: Monday

All Day Type: 3 Motion

00:00 - 24:00 Type: Motion

00:00 - 00:00 Type: Normal

00:00 - 00:00 Type: Normal

00:00 - 00:00 Type: Normal

00:00 - 00:00 Type: Normal

00:00 - 00:00 Type: Normal

00:00 - 00:00 Type: Normal

00:00 - 00:00 Type: Normal

00:00 - 00:00 Type: Normal

Copy To: 4 All Mon Tue Wed Thu Fri Sat Sun Holiday

2 Edit

5 OK Cancel

Legend:

- Normal
- Event
- Motion
- Alarm
- M and A
- M or A
- None

3. Go to **Main Menu -> Alarm -> Motion -> Motion Detection**. Enable Motion detection on each channel.

Alarm Motion Detection

Select Camera: D1(Camera)

1 Enable

2


Trigger Actions

Arming Schedule

Sensitivity

Full Screen Clear All

4. Test to be sure motion is detected and the NVR is recording the motion.

Move around in front of the camera, the icon  will display at the top-right corner on each channel. If the icon does not appear, you should access camera web interface configurations and enable motion detection manually.

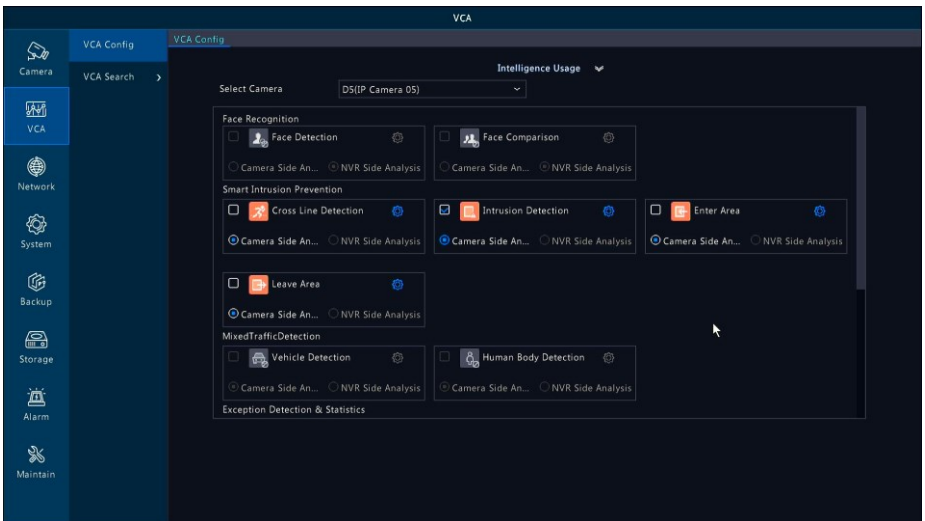
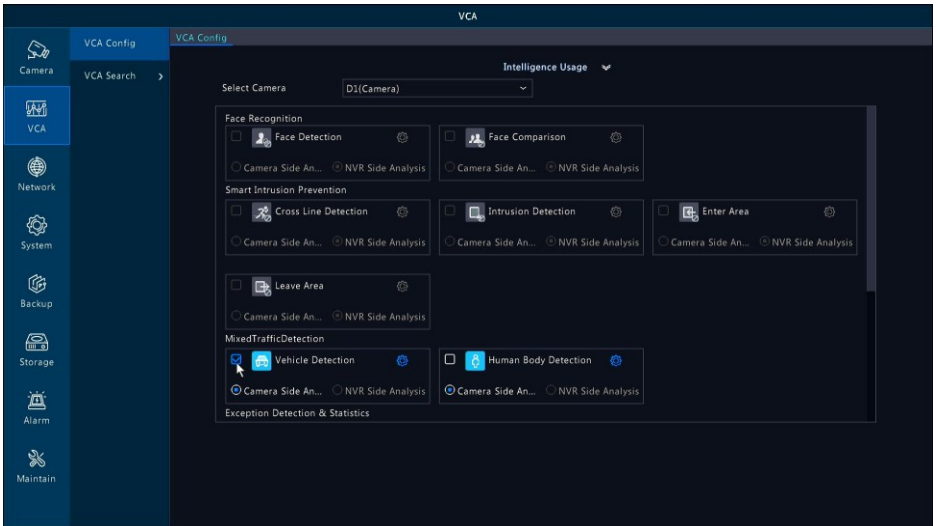
Important:

Some third-party camera cannot enable motion detection function via NVR menu directly, you should access camera web interface to enable Motion Detection.

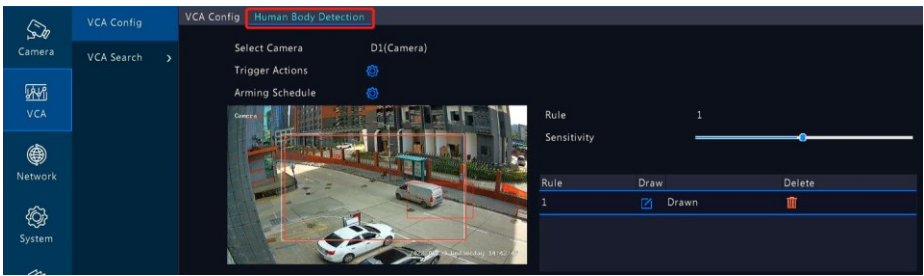
***Intelligent Smart VCA functions**

***NVR VCA Capabilities:**

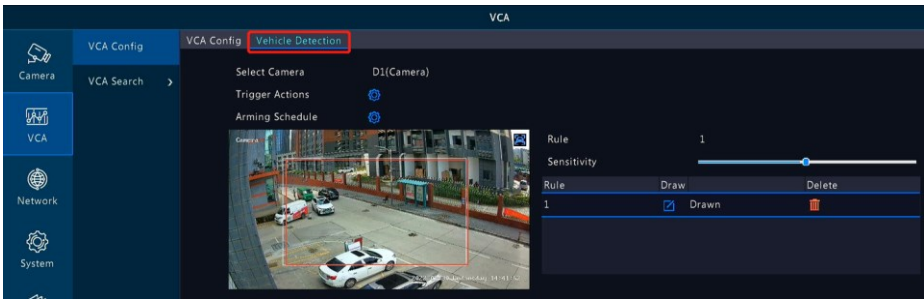
Face Recognition	Face Detection Face Comparison
Perimeter Protection	Cross Line Intrusion Detection Enter Area / Leave Area
Mixed-Traffic Detection	Vehicle Detection Human Body Detection
People Counting	People Flow Counting Crowd Density Monitoring Counting Report
Exception Detection & Statistics	Defocus Detection Scene Change Detection Object Removed Object Left Behind Auto Tracking



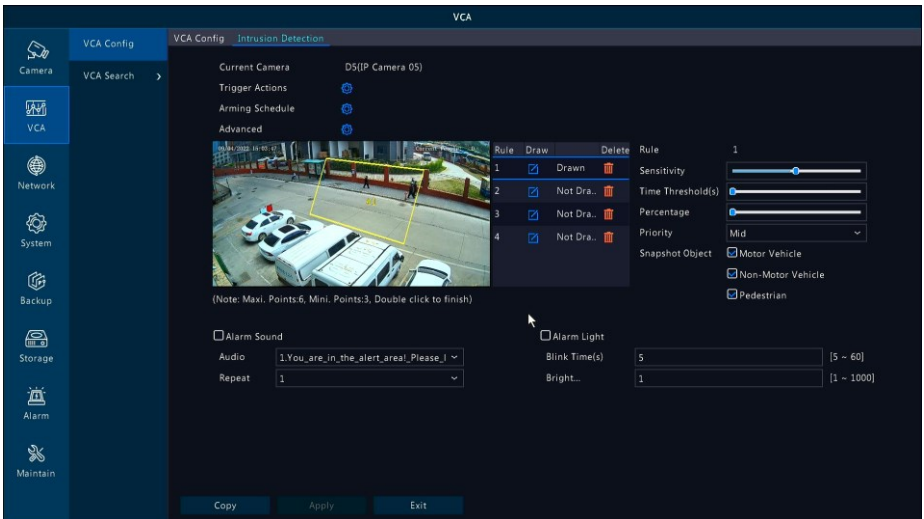
Human Body Detection

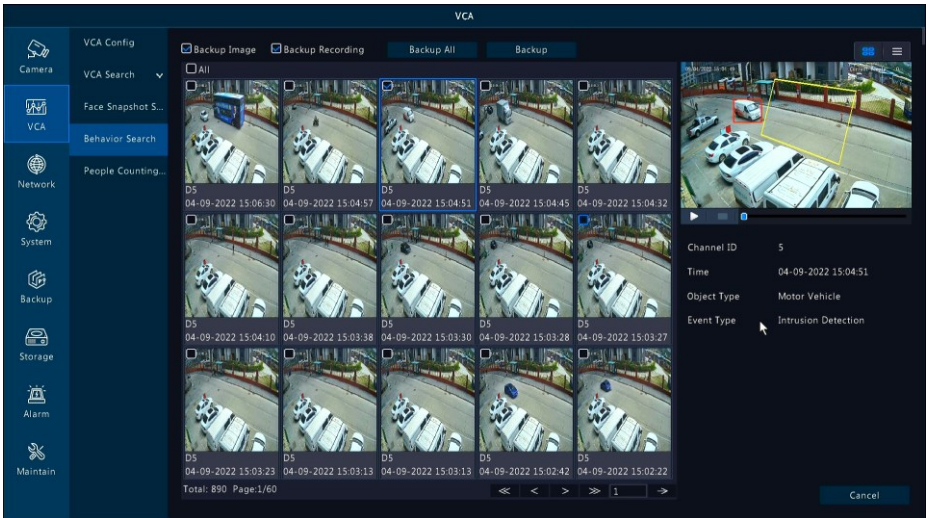


Vehicle Detection



Intrusion Detection





***Note:**

Different camera models may have different functions, the pictures above are for reference only. If you have any questions about VCA contact your supplier.

General video playback

Go to **Start** -> **Playback** or **right-click** menu **Playback** to get into the playback interface.

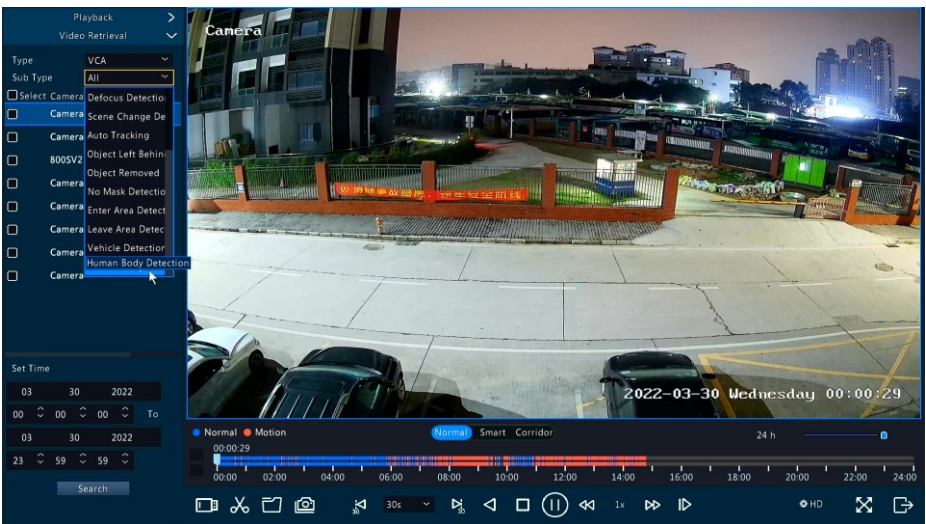
Select the desired date and camera then click time line to start playback.



In this interface, cut video, copy to USB, playback USB files, snapshot functions are available.

VCA playback

Go to **Start** -> **Playback** or **right-click** menu **Playback** to get into the playback interface, select **Video Retrieval** for VCA type event video search.



Remote access via mobile phone

This NVR supports Android and iPhone app remote access. Follow the steps below to make it work:

1. Search **Guard Viewer** in Google Play or Apple Store, or scan the QR code to download and install the app.



Guard Viewer

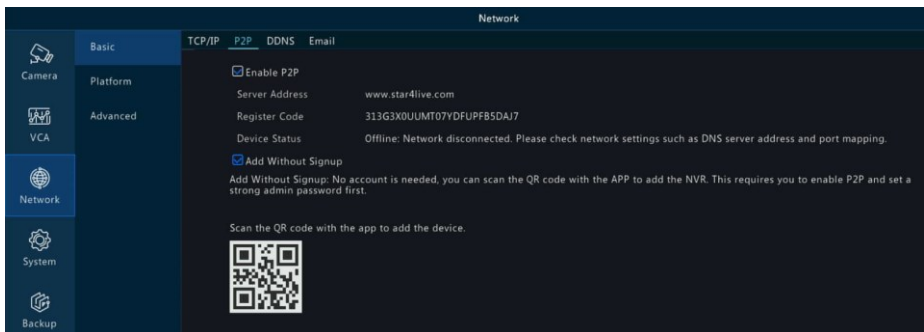


Android

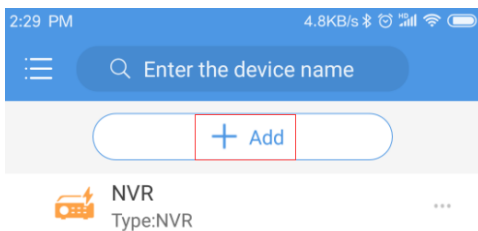


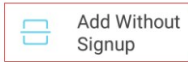
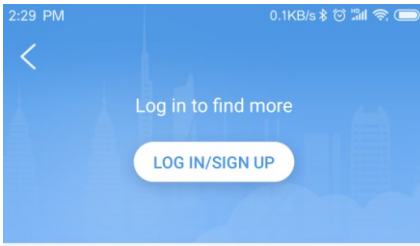
iPhone

2. Go to Main Menu -> **Network** -> **Basic** -> **P2P**, make sure the **Enable P2P** is checked, **Add Without Signup** is checked and the **Device Status** is **Online**.



3. Open the **Guard Viewer** app, and tap **+Add** scan the QR code in above step.





Scan to add device (except VMS) without signup. Make sure the device has enabled this function and has a strong password.



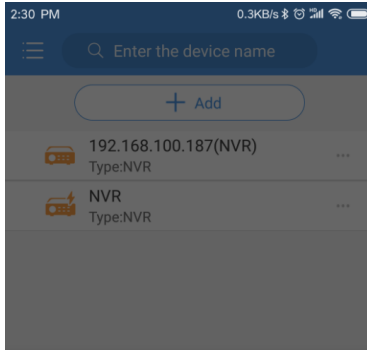
Manual Add



Auto Search in LAN



Add Wi-Fi Device



192.168.100.187(NVR)



Start Live View



Edit



Bind Cloud Account



Alarm Output

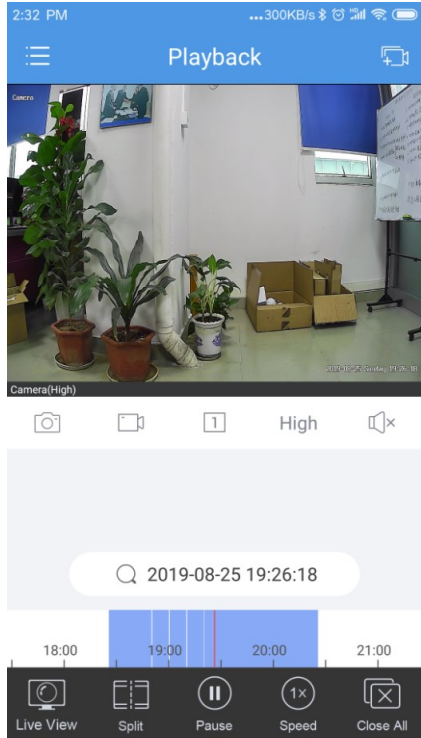
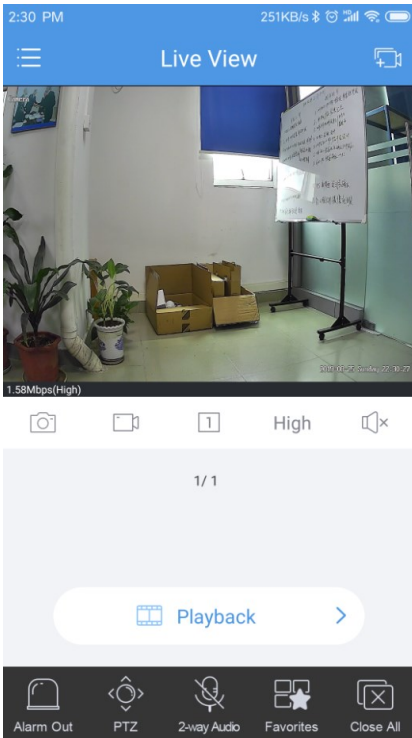


Delete

Note:

It's more security via Sign Up and scan to binding the device to a master account. It will reduce the risk of admin password leakage and easy to share with your family.

4. Live view and playback on mobile phone via app



Important:

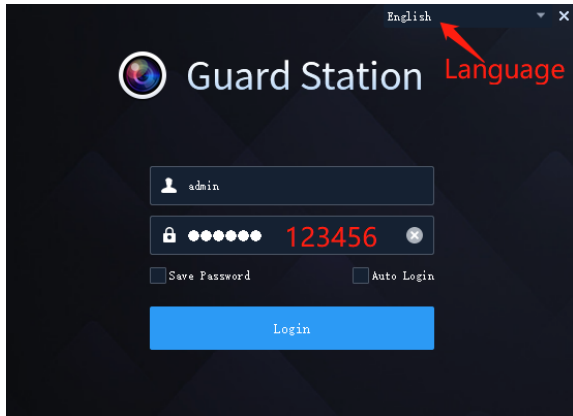
- A strong login password for NVR is required to use **Add Without Signup**. Everyone can scan the device QR code to add this device to app.
 - It's highly recommended to register an account and sign in to the app with the account to bind the NVR to app. This is the most reliable usage for this series NVR.
 - Once the NVR is added to the app account, the first account will become the owner and other users can not add the NVR to their app until you share it manually.
-

Remote access NVR via PC client software

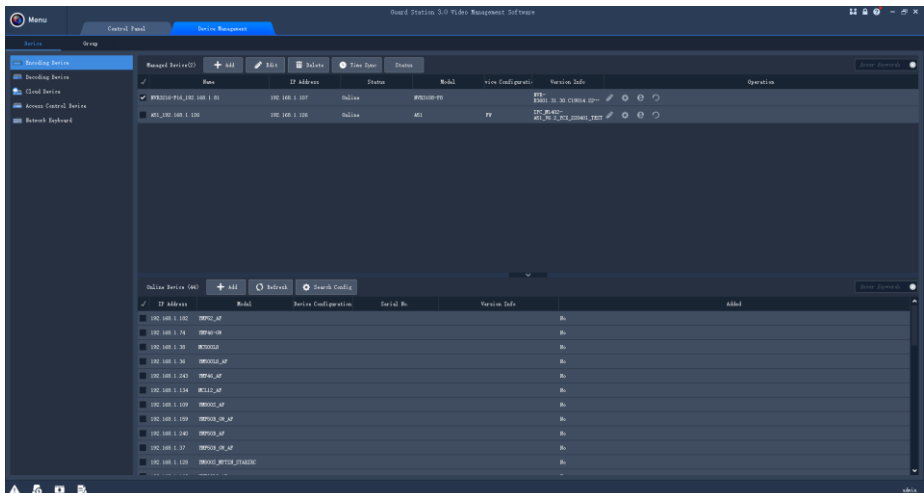
1. For Windows PC please download the software **GuardStation_for_windows.exe** and install it as administrator.
2. For Apple mac please download the software **GuardStation_for_mac.pkg.**
3. Login with default username and password (*admin 123456*)



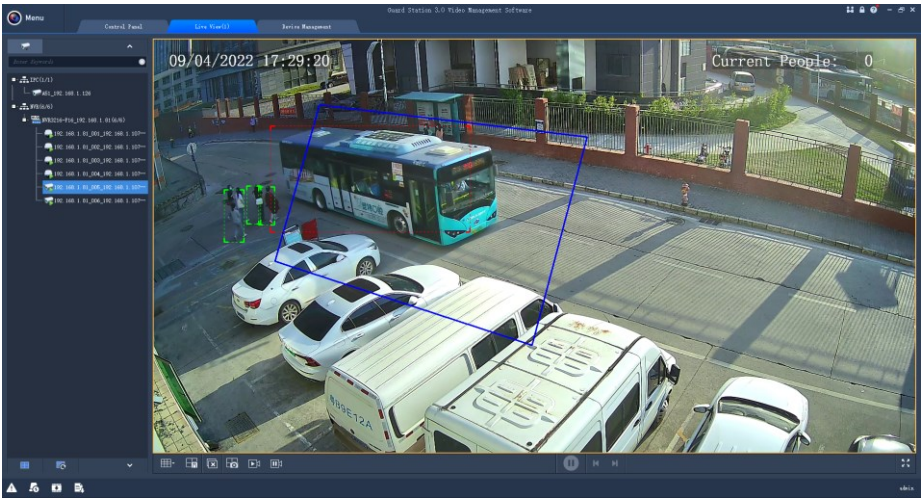
Guard Station 3.0



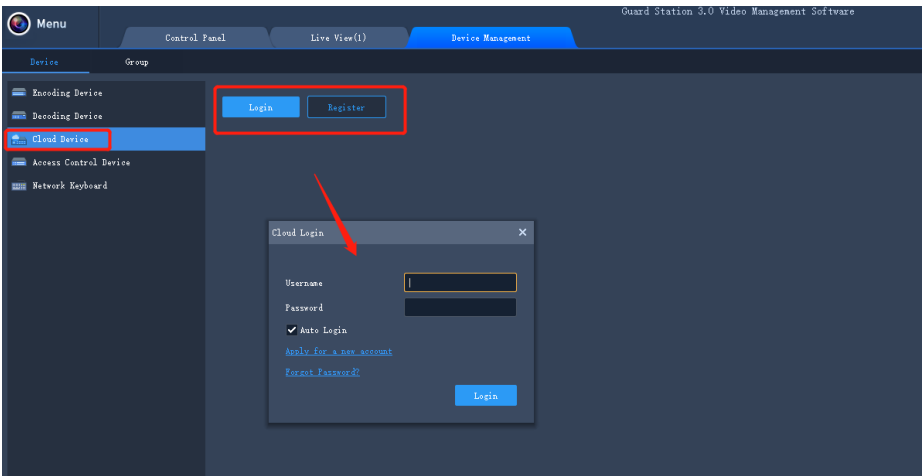
4. Goto **Device Management** to add devices.



(Default user name: admin, Password: 123456)

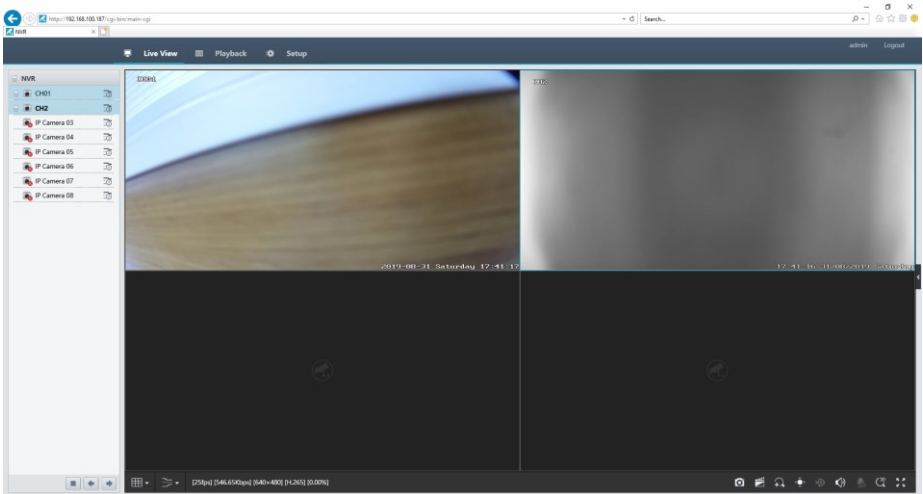
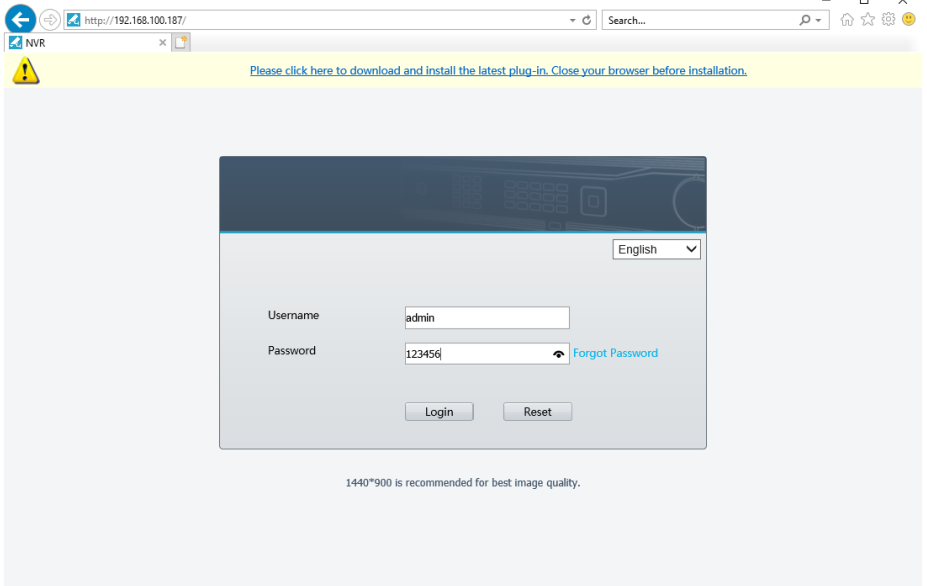


If you want remote access to NVR via this PC client software anywhere you should register an account to bind you NVR. The fast way is register via mobile app **Guard Viewer**, then login on PC.

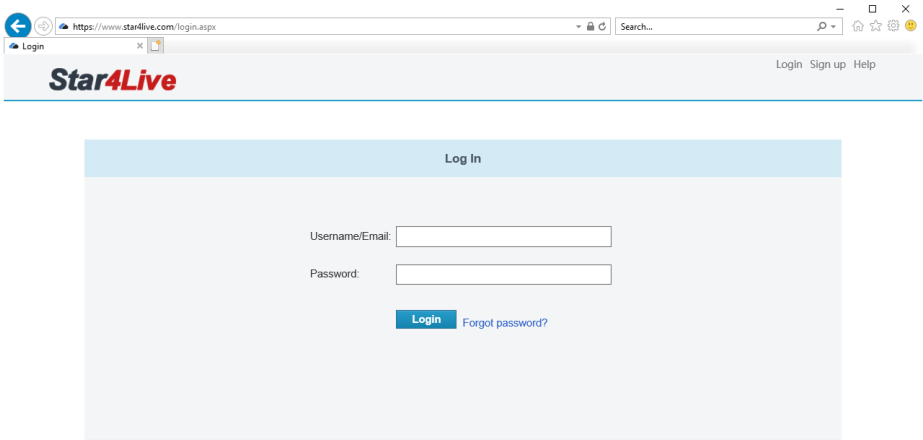


Remote view NVR via Internet Explorer

For local IP address access enter the NVR IP address into address bar in Internet Explorer to get into the NVR Web interface. You may be prompted to install the webplayer plug-in at the first time logging in to the web interface



For Internet remote cloud access , please go to <https://www.star4live.com>



Sign up or login to your account to view your device via cloud management service interface.

Admin Password Reset

Click **Forgot Password** on the **Login** page, take a picture of the serial number dialog box and then send it to your dealer for a **Security Code** to reset your password.

