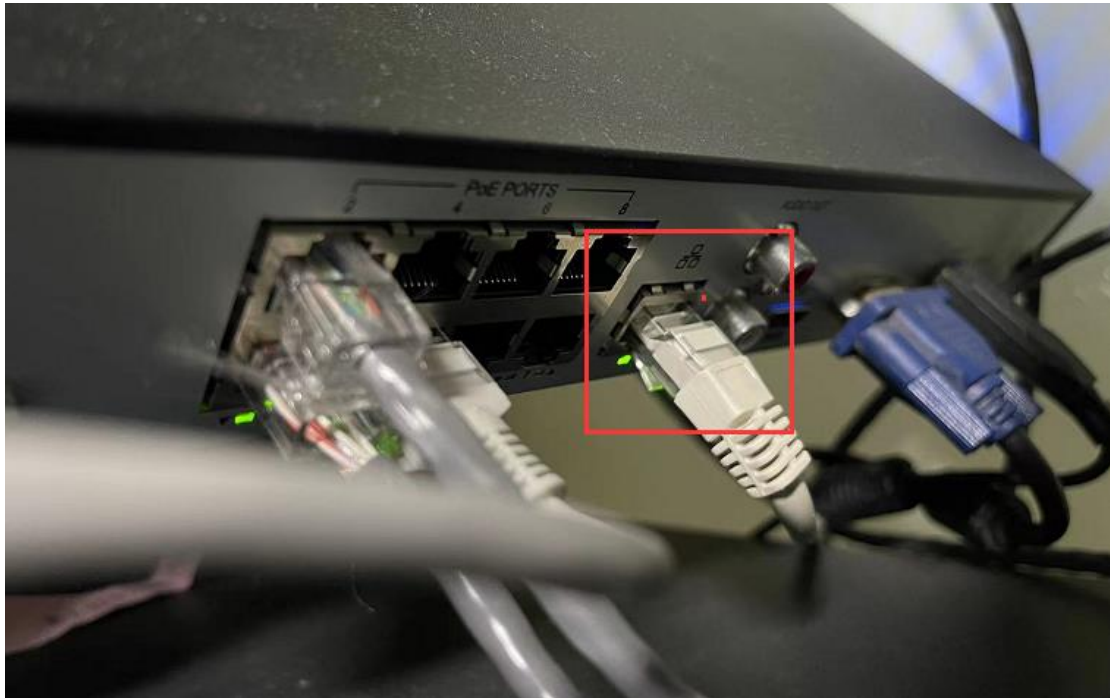


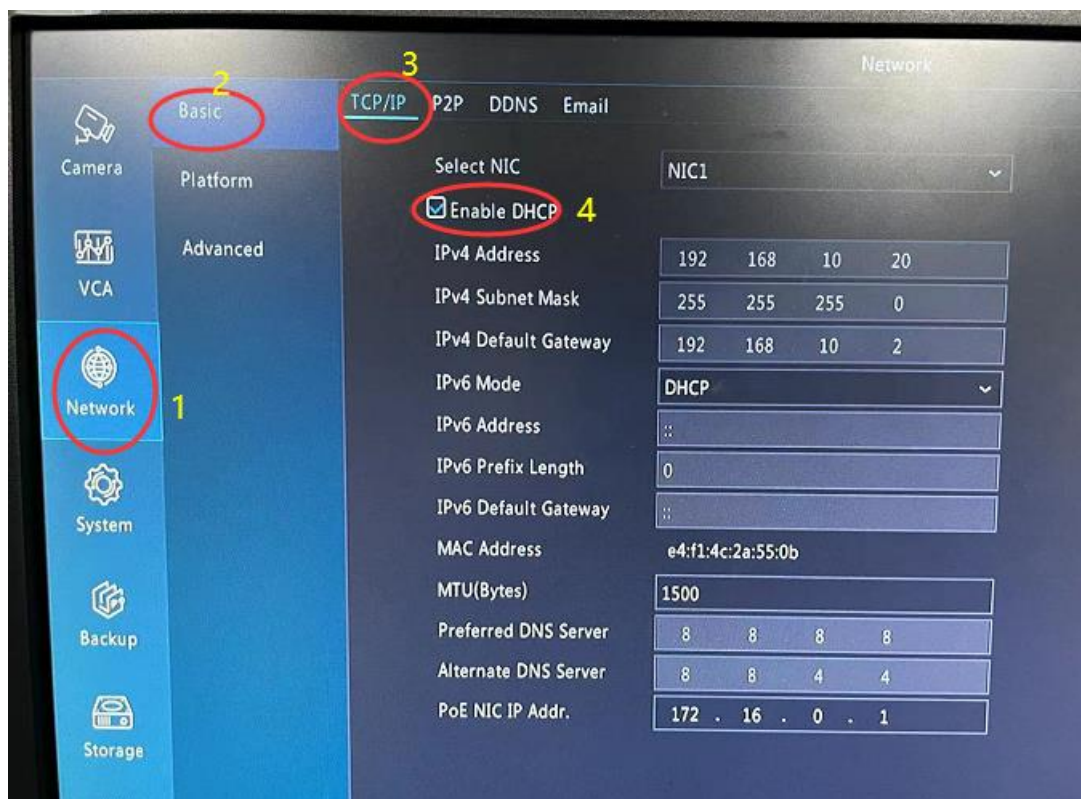
How to make the camera system viewable over WAN

1. Briefly speaking, if we want to view our camera systems through our mobile phone while we're not at home, we have to make sure the camera system connected into Internet firstly.

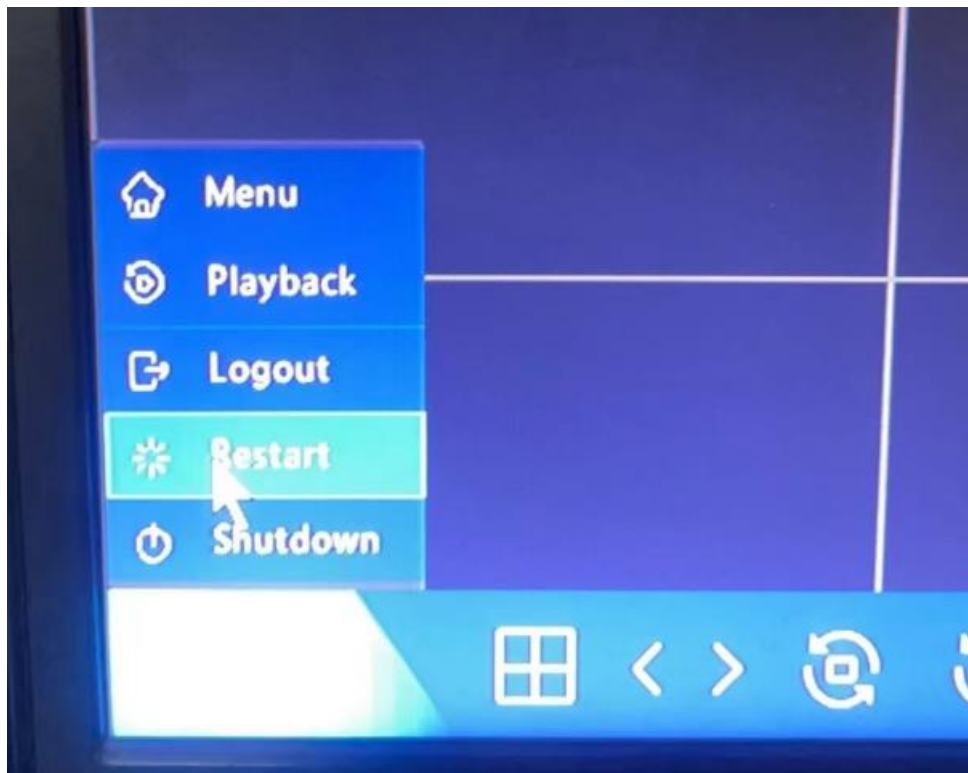
When we check the rear panel of our NVR system, we can find that there were PoE ports (8/16 port depends on your system), and there also a network port in the middle which let you connect the NVR recorder into your local network (it can be a router or switch, or WiFi bridge that access to the internet in your home)



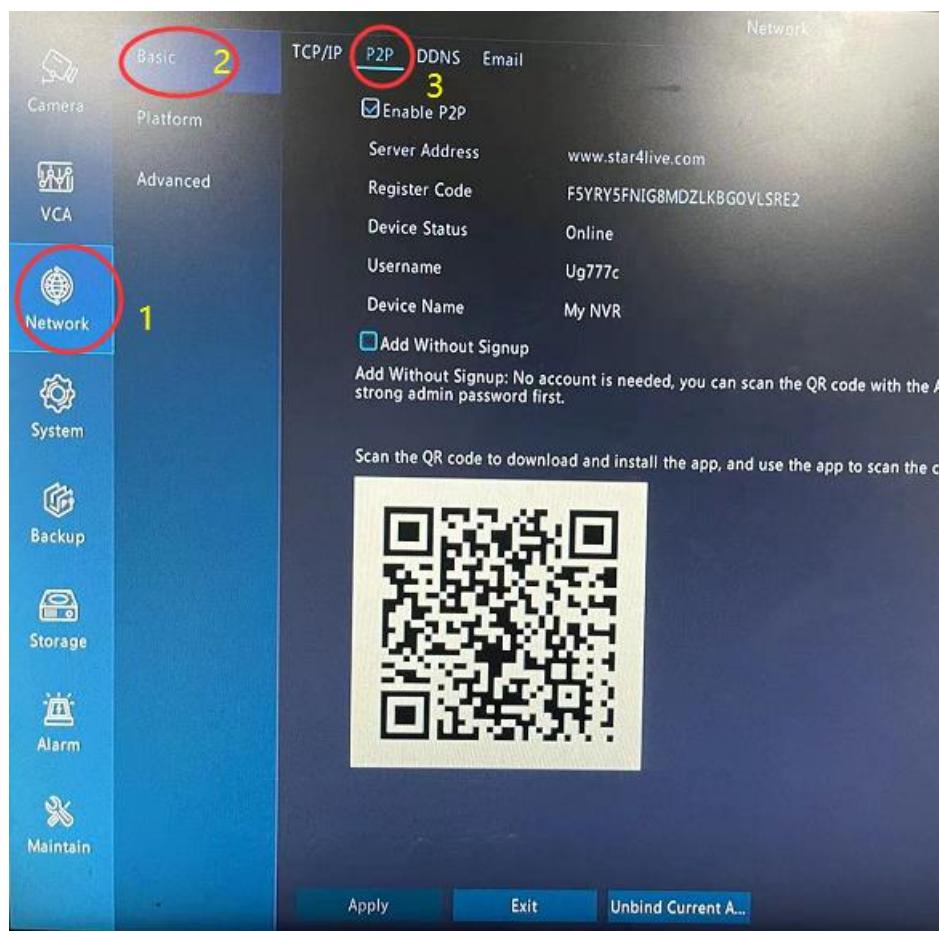
2. After we connecting NVR recorder into the local network, we have to set on our recorder, we can enter the "Main Menu">"Network"> "Basic">"TCP/IP"> "Enable DHCP", like picture below:



Enable DHCP will make it easier to join your local network. If you're aware of your network's IP segment, you can also set it manually. And after Enabled DHCP, we can back to the main menu, on the left-bottom of monitor, there is a "Home" icon and let's select "Restart" the device.



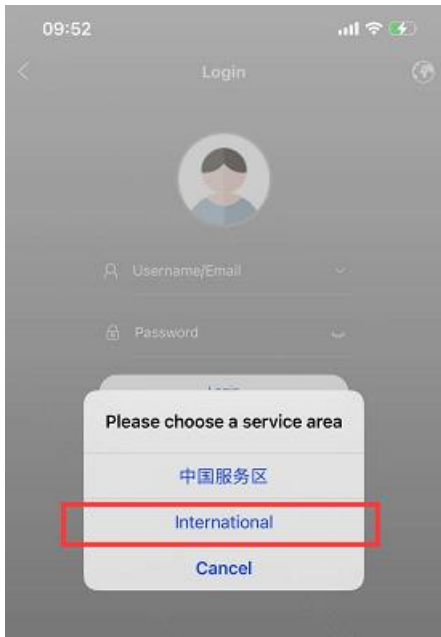
3. Then you can go to set P2P for mobile APP view. we can enter the "Main Menu">" Network"> "Basic">" P2P">, like picture below. There will be a QR code that you can scan through APP "**Guard Viewer**"



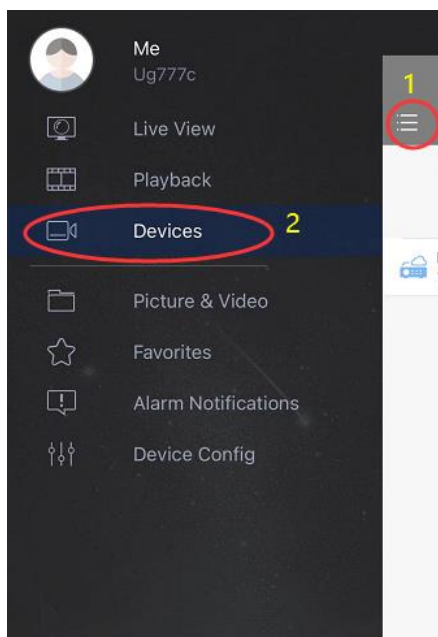
4. Now we back to Guard Viewer APP. Please follow as picture below step by step. Select "International", login and

find “Devices”, then “Scan” the QR code from “Step 3”.

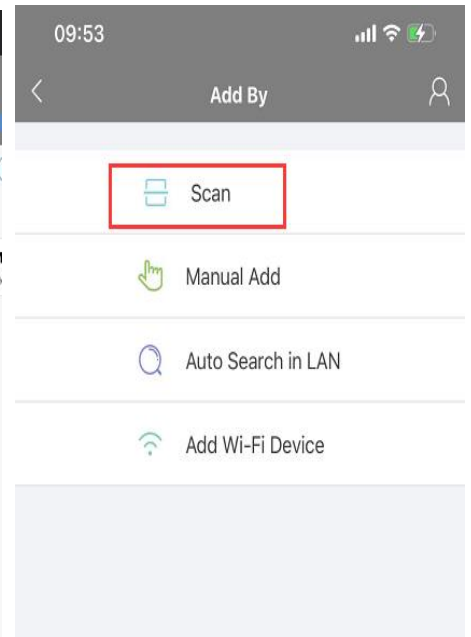
(1)



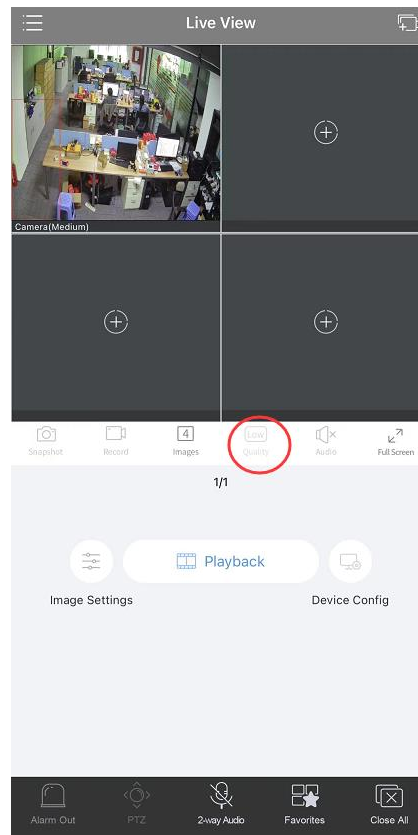
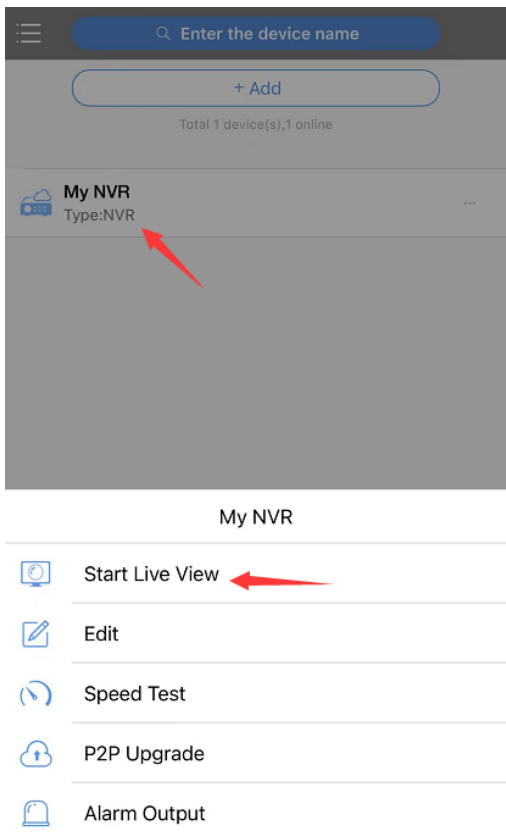
(2)



(3)



5. Now you can find our device had been successfully added, and we select “Start Live View”, we can see the picture come out, and in this page, we can choose “quality” depends on the network connection to choose high, medium or low video/image quality. And also if want to hear the voice, we can allow the “Audio” to hear the voice that came from the camera, because all our cameras built-in Microphone.



Finally, regarding view the camera from web browser when you were out, this is a bit complicate, it requires either you apply or deploy a fixed IP address for this NVR (not ip address from router), or setup DDNS for your router or this NVR recorder. I can guide you if it's necessary. But mobile APP view is most widely used now.

For any questions, welcome to contact us support@gwsecu.com or WhatsApp

