

How to setup GWSECU 8ch/16ch NVR Security System

For the 8ch and 16ch system, the default user: admin, default password: 123456

If you have any questions, please contact our technical assistance via email:
support@gwsecu-cctv.com

A- System connection (better try to connect it before installation)

Both 8 cameras and 16 cameras system are NVR with PoE, cameras can be connected to NVR's PoE port through the cables we've provided, simply like picture below.

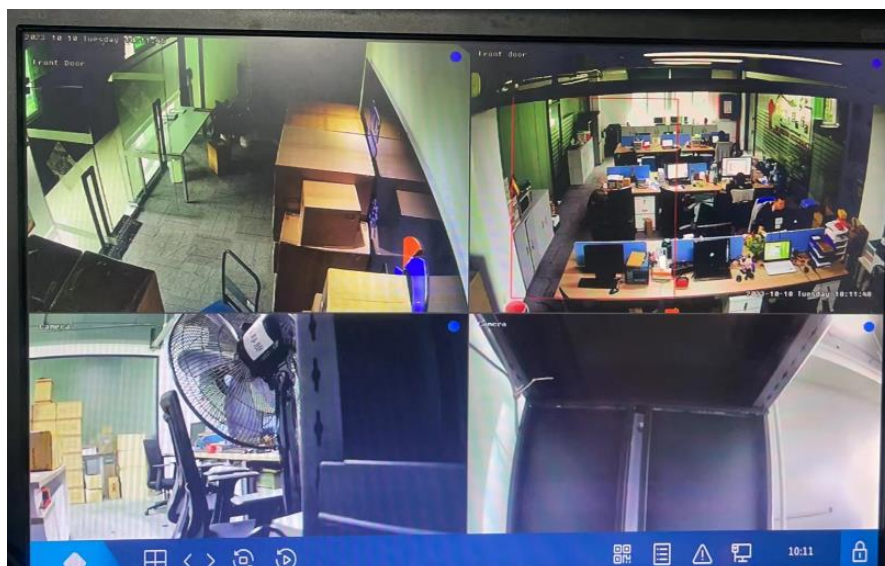


PIC-3

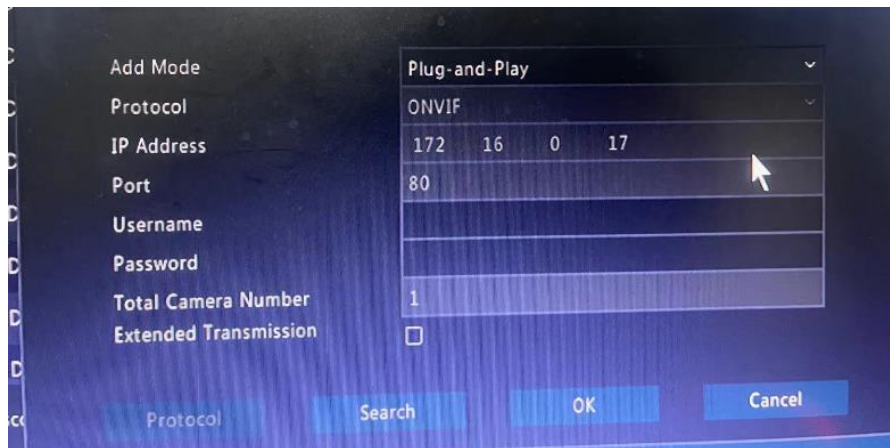


B- System setup.

1- If you've purchased a whole set of GWSECU camera system. Or both your NVR recorder and PoE cameras are GWSECU brand, it's a PoE plug-and-play system. Basically, when you connect the camera correctly like above the system will automatically display like below.



Note: When you use GWSECU camera and NVR, it doesn't require to input user name and password of the camera, just left it blank. Like picture below.



2- If you're using GWSECU NVR, but other brand PoE cameras. Our NVR support Onvif protocols to add any third-party PoE cameras if they have following features.

- a- Onvif protocol compatible;
- b- 802.3af standard PoE built-in;
- c- "DHCP" enabled, or IP address in same gateway with our NVR.

And then we connect the camera like step 1. In this situation we need to input the camera's correct user name and password which you have to contact your camera supplier.

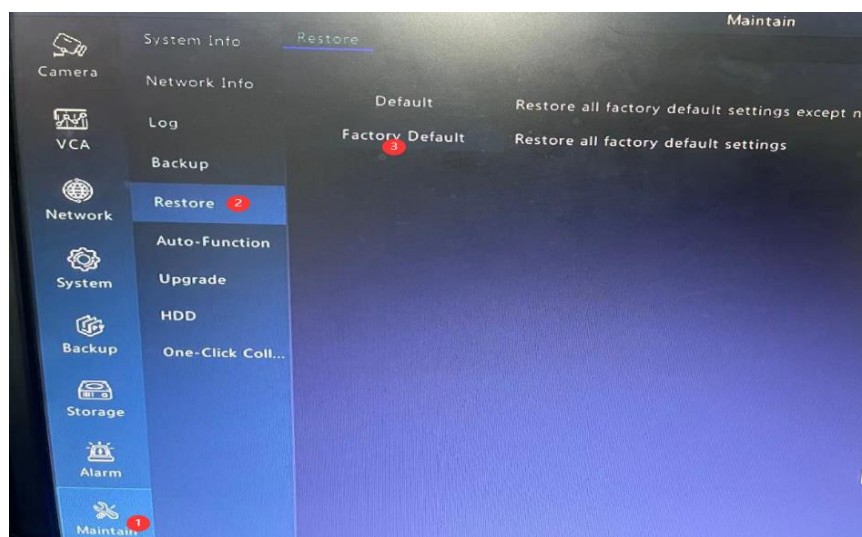
Trouble Shooting:

1- If the camera connected but says offline.

Firstly, check if the cable connection between camera and NVR is tight or light flashing. Like above PIC-3. If the cable not flashing, try to change a new cable or cable from a working camera, or change a port on the back to check if the camera or NVR issue.

Secondly, if all connection correct and light flashing, try to "restore" the NVR from main menu>maintain>restore>factory default like picture below.

PIC-7



2- If a brand new system and connected as above, but camera says offline.

Check the cable connection firstly, if light flashing and connection correct, then click "refresh" like below and wait for 1 minute.

